

[www.indiratrade.com](http://www.indiratrade.com)



MONDAY

# CURRENCY COMMODITIES

**WEEKLY REPORT**

**13 MAY 2019 TO 17 MAY 2019**

**EDGE**



**INDIRA SECURITIES PVT. LTD.**



## WEEKLY INDICES CHANGES

INDEX	CLOSE	PREV. CLOSE	Change (%)
SENSEX	37462.99	38963.26	-3.85%
NIFTY	11278.9	11712.2	-3.70%
DOW	25942.4	26504.9	-2.12%
NASDAQ	7916.94	8164	-3.03%
FTSE	7203.29	7380.64	-2.40%
NIKKEI	21207.5	22258.7	-4.72%
DAX	12059.8	12412.8	-2.84%
CAC	5327.44	5548.84	-3.99%

SS

## Market Round Up:

- Forex - Dollar Dips on Profit-Taking as Tariffs Come into Force: - The dollar is broadly lower in early trading in Europe on Friday as markets 'sell the fact' of higher U.S. tariffs on China, after 'buying the rumor' all week.
- As of Friday, tariffs on \$200 billion worth of Chinese imports into the U.S. will be raised to 25% from 10%, and President Donald Trump said he had ordered the preparation of new tariffs on a further \$325 billion worth of goods. If they, too, come into force that will mean nearly all of the U.S.'s imports from China will be subject to a 25% tariff. Beijing threatened to retaliate overnight but had not issued any detailed measures as of the time of writing.
- The euro was slightly higher at \$1.1230, on course for a gain of around a quarter of a percent for the week.
- The dollar index, which measures the greenback against a basket of six major currencies, was at 97.21, its stability masking a 1% drop against the safe-haven yen this week. The dollar failed to make meaningful gains against the yen on Friday even after the biggest drop in Japanese average earnings in four years in March, which also contributed to household spending falling short of analyst expectations.

## RBI REFRANCE RATE

INDEX	CLOSE	PREV. CLOSE
USDINR	69.9212	69.2679
EURINR	78.4884	77.3390
JPYINR	63.7200	62.1300
GBPINR	90.9269	90.2404

## FII FIGURES

DATE	FII FIGURES IN CRORE
06/05	-948.98
07/05	-645.08
08/05	-701.07
09/05	-655.36
10/05	-1,245.14
NET	-4196

## DII FIGURES

DATE	DII FIGURES IN CRORE
06/05	89.89
07/05	818.84
08/05	232.95
09/05	677.91
10/05	1,057.42
NET	+2877



## DOLLAR INDEX CHART



US Dollar Index	
RSI(14)	BUY
STOCH(9,6)	SELL
STOCHRSI(14)	SELL
MACD(12,26)	BUY
ADX(14)	SELL
Williams %R	NETURAL
CCI(14)	BUY
Highs/Lows(14)	BUY
Ultimate Oscillator	BUY
ROC	BUY
BUY	5
SELL	3
NEUTRAL	1
<b>SUMMARY</b>	<b>NETURAL</b>

## USDINR TECHNICAL CHART (INDIAN RUPEE)



USDINR.Rolling	
RSI(14)	SELL
STOCH(9,6)	SELL
STOCHRSI(14)	SELL
MACD(12,26)	SELL
ADX(14)	SELL
Williams %R	NETURAL
CCI(14)	SELL
Highs/Lows(14)	0
Ultimate Oscillator	BUY
ROC	BUY
	SELL
BUY	2
SELL	7
NEUTRAL	1
<b>SUMMARY</b>	<b>STRONG BEARISH</b>





## DOMESTIC CURRENCY

Domestic	S2	S1	PIVOT	R1	R2
USDINR	68.92	69.19	69.69	69.96	70.46
EURINR	76.85	77.25	78.01	78.42	79.18
GBPINR	89.77	90.11	90.76	91.11	91.75
JPYINR	61.85	62.14	62.65	62.94	63.46

## GLOBAL CURRENCY

Global	S2	S1	PIVOT	R1	R2
DOLLAR INDEX	96.61	97.04	97.57	98	98.53
EURUSD	1.11	1.12	1.12	1.12	1.13
GBPUSD	1.29	1.3	1.3	1.31	1.32
USDJPY	111.02	111.16	111.3	111.44	111.58

## CURRENCY PERFORMANCE

CURRENCY	CLOSE PRICE	DAY	WEEK	MONTHLY	YEARLY
EURO	1.12337	0.01%	0.32%	-0.63%	-5.81%
POUND	1.30144	0.12%	-0.63%	-0.52%	-4.00%
AUSTRALIAN DOLLAR	0.69777	-0.32%	-0.14%	-2.70%	-7.25%
NEWZEALAND DOLLAR	0.6583	-0.21%	-0.42%	-2.63%	-4.77%
YEN	109.73	-0.19%	-0.92%	-2.06%	0.09%
YUAN	6.88822	0.68%	1.72%	2.71%	8.71%
SWISS FRANC	1.01073	-0.09%	-0.67%	0.71%	1.05%
CANADIAN DOLLAR	1.34375	0.19%	-0.06%	0.56%	4.89%
MEXICAN PESO	19.1387	0.23%	0.82%	1.52%	-2.48%
INDIAN RUPEE	70.015	0.02%	0.92%	0.91%	3.64%
BRAZILIAN REAL	3.9566	0.28%	0.48%	2.58%	9.24%
RUSSIAN RUBBLE	65.225	0.21%	0.22%	1.01%	5.43%
DOLLAR INDEX	97.3	-0.03%	-0.21%	0.42%	5.10%
KORREAN WON	1183.84	0.82%	1.73%	3.76%	10.62%
SOUTH AFRICAN RAND	14.2252	0.52%	-0.81%	1.63%	15.44%
SINGAPORE DOLLAR	1.36471	0.15%	0.12%	0.88%	2.15%
HONGKONG DOLLAR	7.84901	0.01%	0.04%	0.12%	-0.01%

# COMMODITIES

## FUNDAMENTAL OF COMMODITIES

### MAJOR COMMODITIES

#### MCX ENERGY WEEKLY

Commodity	S2	S1	Pivot	R1	R2
Crude oil	4079.0	4193.0	4356.0	4470.0	4633.0
Natural Gas	173.5	176.0	179.9	182.4	186.3

#### MCX BASE METAL WEEKLY

Commodity	S2	S1	Pivot	R1	R2
Copper	415.8	425.1	437.4	446.7	459.1
Zinc	208.4	214.3	223.0	228.8	237.5
Lead	121.6	126.3	131.3	136.0	141.0
Nickel	827.8	837.5	851.8	861.5	875.8

#### PRECIOUS METAL WEEKLY

Commodity	S2	S1	Pivot	R1	R2
Gold	30863.0	31155.0	31532.0	31824.0	32201.0
Silver	35314.0	36007.0	36864.0	37557.0	38414.0

International Commodity	S2	S1	Pivot	R1	R2	CMP	PREV CLOSE
Gold COMEX	\$1,257.00	\$1,269.00	\$1,279.00	\$1,291.00	\$1,301.00	\$1,285.00	\$1,281.00
SILVER COMEX	14.39	14.69	14.86	15.16	15.33	14.77	14.98
NYMEX CRUDE	58.75	60.34	62.55	64.14	66.35	61.7	61.94
BRENT CRUDE	67.69	69.27	71.27	72.85	74.85	70.33	70.85

#### Updates:

- Oil Prices Hold On to Gains despite Tariff Increase: - Oil prices rose on Friday, looking past the increase in U.S. tariffs on Chinese goods during a volatile week for crude.
- Gold extends upside run, heads for slim weekly gain as trade battle escalates: - Gold futures gained on Friday, putting prices on track for a modest weekly rise, as the Trump administration increased tariffs on \$200 billion in Chinese imports, a move that appeared to maintain selling pressure on riskier global markets and benefit haven precious metals.
- The U.S. raised the import taxes on select goods from 10% to 25%, as the administration claims its Chinese counterparts reneged on commitments made in earlier talks. China has threatened to retaliate to the latest U.S.-imposed tariffs, yet talks were continuing Friday.



# COMMODITIES

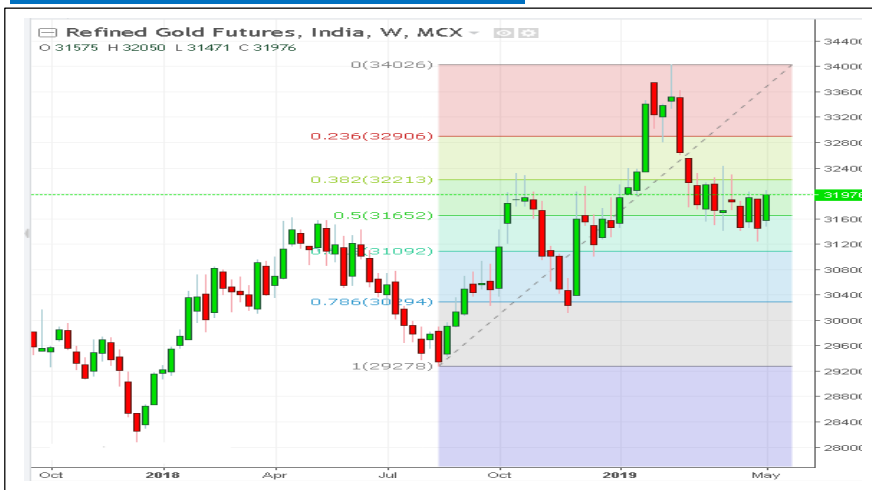
## MAJOR COMMODITIES

Commodity Major	Price	Day	Weekly	Monthly	Yearly
<b>Crude Oil</b>	61.4864	-0.11%	-1.21%	-3.44%	-13.33%
<b>Brent</b>	70.8203	0.23%	-0.59%	-0.93%	-9.47%
<b>Natural gas</b>	2.6163	-0.27%	3.66%	1.01%	-7.94%
<b>Gold</b>	1285.04	-0.08%	0.39%	-0.20%	-2.09%
<b>Silver</b>	14.7398	-0.27%	-1.08%	-1.70%	-10.67%
<b>Platinum</b>	853.92	-0.82%	-2.13%	-3.51%	-5.64%
<b>Palladium</b>	1336.64	-1.50%	-0.03%	-1.83%	34.27%
<b>Copper</b>	2.7639	-0.95%	-2.61%	-5.83%	-10.25%
<b>Lead</b>	1807.25	-0.78%	-4.24%	-5.31%	-23.86%
<b>Aluminum</b>	1808	0.50%	0.50%	-2.80%	-22.04%
<b>Tin</b>	19625	1.90%	1.55%	-4.62%	-6.32%
<b>Zinc</b>	2630	0.77%	-5.09%	-8.20%	-13.91%





## MCX GOLD CHART



Commodity	S2	S1	Pivot	R1	R2
Gold	30863.0	31155.0	31532.0	31824.0	32201.0

GOLD TECHNICAL INDICATOR	
RSI(14)	BUY
STOCH(9,6)	BUY
STOCHRSI(14)	BUY
MACD(12,26)	SELL
ADX(14)	SELL
Williams %R	NETURAL
CCI(14)	SELL
Highs/Lows(14)	BUY
Ultimate Oscillator	SELL
ROC	SELL
BUY	4
SELL	5
NEUTRAL	1
SUMMARY	NETURAL

## GOLD INTERNATIONAL CHART



Commodity	S2	S1	Pivot	R1	R2
Gold	\$1,257.0	\$1,269.0	\$1,279.0	\$1,291.0	\$1,301.0

GOLD INTERNATIONAL TECHNICAL INDICATOR	
RSI(14)	BUY
STOCH(9,6)	BUY
STOCHRSI(14)	BUY
MACD(12,26)	SELL
ADX(14)	SELL
Williams %R	NETURAL
CCI(14)	SELL
Highs/Lows(14)	BUY
Ultimate Oscillator	SELL
ROC	SELL
BUY	4
SELL	5
NEUTRAL	1
SUMMARY	NETURAL



## MCX SILVER CHART



Commodity	S2	S1	Pivot	R1	R2
Silver	35314.0	36007.0	36864.0	37557.0	38414.0

SILVER TECHNICAL INDICATOR	
RSI(14)	BUY
STOCH(9,6)	SELL
STOCHRSI(14)	SELL
MACD(12,26)	BUY
ADX(14)	SELL
Williams %R	NETURAL
CCI(14)	BUY
Highs/Lows(14)	BUY
Ultimate Oscillator	BUY
ROC	BUY
BUY	3
SELL	6
NEUTRAL	1
<b>SUMMARY</b>	<b>MILD BEARISH</b>

## SILVER INTERNATIONAL CHART



Commodity	S2	S1	Pivot	R1	R2
Silver	\$14.4	\$14.7	\$14.9	\$15.2	\$15.3

SILVER INTERNATIONAL TECHNICAL INDICATOR	
RSI(14)	SELL
STOCH(9,6)	BUY
STOCHRSI(14)	BUY
MACD(12,26)	SELL
ADX(14)	SELL
Williams %R	SELL
CCI(14)	SELL
Highs/Lows(14)	BUY
Ultimate Oscillator	BUY
ROC	SELL
BUY	4
SELL	6
NEUTRAL	0
<b>SUMMARY</b>	<b>STRONG BEARISH</b>





## MCX COPPER CHART



Commodity	S2	S1	Pivot	R1	R2
Copper	415.8	425.1	437.4	446.7	459.1

### COPPER TECHNICAL INDICATOR

RSI(14)	SELL
STOCH(9,6)	SELL
STOCHRSI(14)	SELL
MACD(12,26)	SELL
ADX(14)	SELL
Williams %R	SELL
CCI(14)	SELL
Highs/Lows(14)	BUY
Ultimate Oscillator	SELL
ROC	SELL
BUY	1
SELL	9
NEUTRAL	0
<b>SUMMARY</b>	<b>STRONG BEARISH</b>

## COPPER INTERNATIONAL CHART



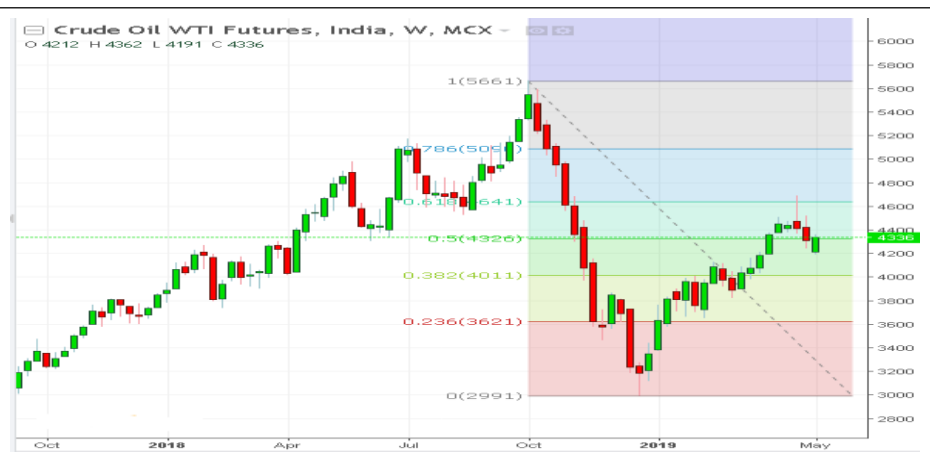
Commodity	S2	S1	Pivot	R1	R2
Copper	\$2.690	\$2.750	\$2.840	\$2.900	\$2.990

### COPPER INTERNATIONAL TECHNICAL INDICATOR

RSI(14)	SELL
STOCH(9,6)	SELL
STOCHRSI(14)	SELL
MACD(12,26)	SELL
ADX(14)	SELL
Williams %R	SELL
CCI(14)	SELL
Highs/Lows(14)	BUY
Ultimate Oscillator	SELL
ROC	SELL
BUY	1
SELL	9
NEUTRAL	0
<b>SUMMARY</b>	<b>STRONG BEARISH</b>



## MCX CRUDE CHART



Commodity	S2	S1	Pivot	R1	R2
Crude oil	4079.0	4193.0	4356.0	4470.0	4633.0

CRUDEOIL TECHNICAL INDICATOR	
RSI(14)	BUY
STOCH(9,6)	SELL
STOCHRSI(14)	SELL
MACD(12,26)	BUY
ADX(14)	SELL
Williams %R	NETURAL
CCI(14)	BUY
Highs/Lows(14)	BUY
Ultimate Oscillator	BUY
ROC	BUY
BUY	5
SELL	3
NEUTRAL	1
SUMMARY	NETURAL

## NYMEX CRUDE CHART



Commodity	S2	S1	Pivot	R1	R2
Crude oil	\$58.8	\$60.3	\$62.6	\$64.1	\$66.4

CRUDE.OILNYM TECHNICAL INDICATOR	
RSI(14)	BUY
STOCH(9,6)	SELL
STOCHRSI(14)	SELL
MACD(12,26)	BUY
ADX(14)	SELL
Williams %R	NETURAL
CCI(14)	BUY
Highs/Lows(14)	BUY
Ultimate Oscillator	BUY
ROC	BUY
BUY	5
SELL	3
NEUTRAL	1
SUMMARY	NETURAL



## MCX NATURAL GAS



Commodity	S2	S1	Pivot	R1	R2
Natural Gas	173.5	176.0	179.9	182.4	186.3

NATURALGAS TECHNICAL INDICATOR	
RSI(14)	SELL
STOCH(9,6)	BUY
STOCHRSI(14)	BUY
MACD(12,26)	SELL
ADX(14)	BUY
Williams %R	NETURAL
CCI(14)	SELL
Highs/Lows(14)	BUY
Ultimate Oscillator	SELL
ROC	SELL
BUY	4
SELL	5
NEUTRAL	1
SUMMARY	NETURAL

## NATURAL GAS INTERNATIONAL



Commodity	S2	S1	Pivot	R1	R2
Natural Gas	\$2.500	\$2.540	\$2.580	\$2.610	\$2.660

NATURAL GAS INTER. TECHNICAL INDICATOR	
RSI(14)	SELL
STOCH(9,6)	BUY
STOCHRSI(14)	BUY
MACD(12,26)	SELL
ADX(14)	SELL
Williams %R	NETURAL
CCI(14)	SELL
Highs/Lows(14)	BUY
Ultimate Oscillator	SELL
ROC	SELL
BUY	3
SELL	6
NEUTRAL	1
SUMMARY	MILD BEARISH







204 Amardarshan Building 3rd floor Saket Nagar , Indore-452018

**Call:** 0731-4797170-173 **Mob:** +91-9303172345 / **Toll Free:** 18001030059 / **SMS:** <INDIRA> to 56070

## DISCLAIMER

This report is for private circulation within the Indira Group. This report is strictly confidential and for information of the selected recipient only and may not be altered in any way, transmitted to, copied or distributed, in part or in whole, to any other person or to the media or reproduced in any form. This report should not be construed as an offer or solicitation to buy or sell any securities or any interest in securities. It does not constitute a personal recommendation or take into account the particular investment objectives, financial situations, or any such factor. The information, opinions estimates and forecasts contained here have been obtained from, or are based upon, sources we believe to be reliable, but no representation of warranty, express or implied, is made by us to their accuracy or completeness. Opinions expressed are our current opinions as of our current opinions as of the data appearing on this material only and are subject to change without notice.